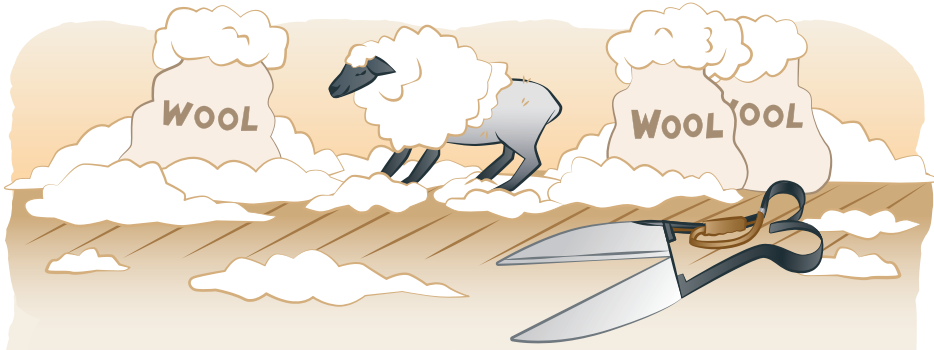




LET'S GET KNITTING!

Processing Irish Wool



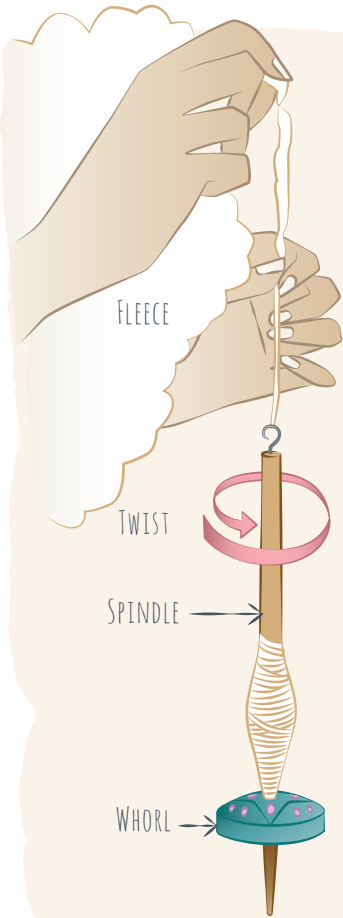
Sustainable

Cut using a shears, a sheep's woollen fleece regrows, making it renewable; wool is also biodegradable, recyclable and can be organic!

Scouring

Fleece is washed or scoured to remove dirt and Lanolin; a natural, water resistant grease that keeps sheep dry.

Lanolin is used as an ingredient in hand cream.



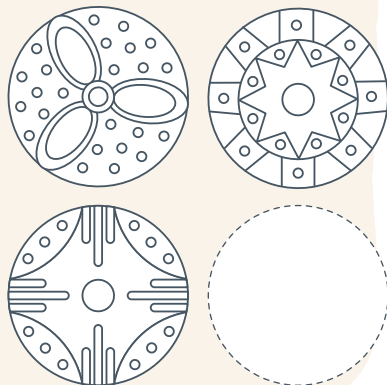
Doing the Twist

Drop spinning uses a spindle and whorl or weight to put twist in wool, helping fibres stick together and become stronger.

Whorl

Whorls are evidence our early ancestors spun wool.

Design a whorl:






Fibre


Wool fibres have rough edges, a comb with metal teeth straightens the fibres making wool feel softer.

Feel different wools, which is softest?

Yield

If a fleece weighs 4.5kg and produces enough fabric to make 2 outfits.

 =  = 

 = =

How many metres will you need for 6 outfits?

